



**Ready. Set. LIVE.**

March 2022





# About US

Sojorne was founded in late 2022 by parents who experienced difficulties navigating complex health, education and life decisions.



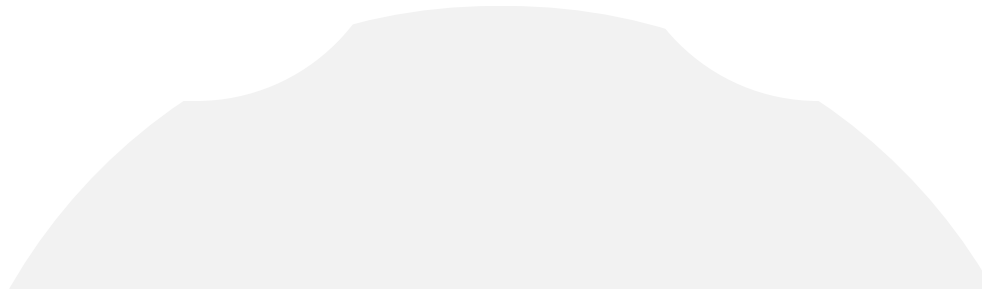
## Mission

To make it easier for families to care for loved ones with special needs or disabilities.



## Vision

Help our families live their best lives.



# THE PROBLEM

## Overview

Families with special needs, disabilities or health conditions need help finding, coordinating, storing, and sharing health, education and life resources, and connecting with others like them.



### Getting Organized Is Hard

70% of families surveyed have trouble managing tasks, medications, appointments, school and documents. More than 90% lack wills or long terms plans, and 100% of respondents lack clear, secure access to their life insurance policies and other assets.



### Finding Help and Community Is Hard

90% of families surveyed seek community. For example, a Boston-based app for families with special needs galvanized a community of 40,000 users. Special needs and disabled communities need to be created and maintained.



### Complying with Your Care Plan is Hard

A 2015 Study reported that medication compliance among people with special populations varied widely from 45% to 90%. Compliance is enhanced by value-based healthcare models which include RPM.

# PRODUCT FEATURES

Sojorne is a digital health and special needs care coordination platform designed for parents, not patients. Sojorne's parent platform feels social and keeps parents informed and on top of their life priorities. Sojorne's unique provider platform enables marketplace services and well as secure, telehealth and remote patient monitoring securely without a clinical feel.

*\* Sojorne will seek to build and operate in compliance with HIPAA and International Patient Records Security Guidance.*



**Health, Medication, Provider Search and TeleHealth & Remote Provider Monitoring**



**K-21 Education, Learning Milestones and Post-Secondary Transition Plan**



**Legal, Insurance, Financial Resources**



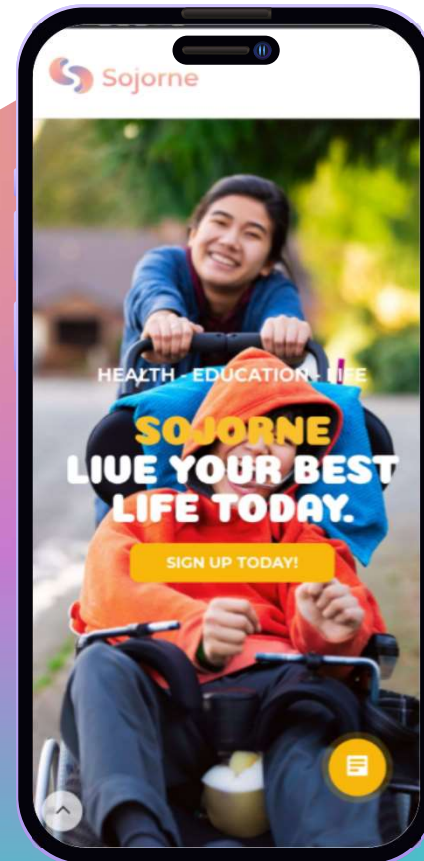
**Care coordination with Your Care Circle**

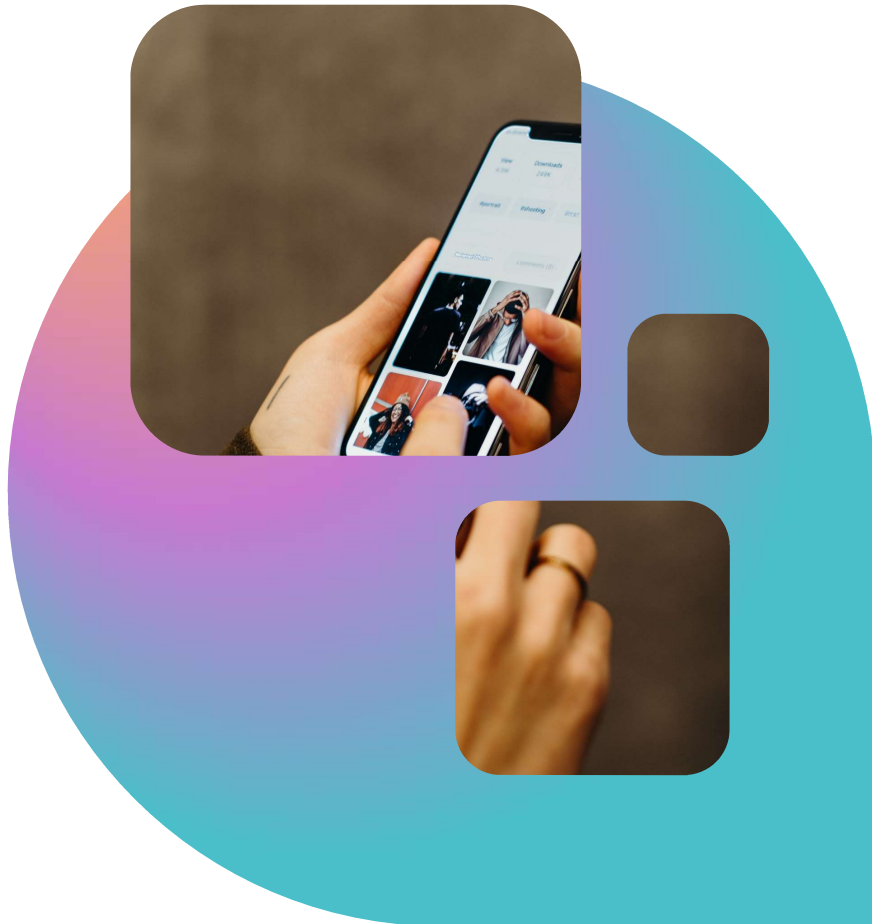


**Parent Support, Social Groups and Community**

# OUR Product

- Families caring for individuals with disabilities must make **complex care** decisions everyday.
- Sojorne provides them with the **tools** to make these decisions and connects them with the **right care**, **education**, and **legal resources**, and **healthcare** providers so that they can live their best lives.
- Sojorne makes a stressful process **more enjoyable** by **removing clinical interfaces** and embedding community throughout our platform





# OUR PRODUCT

## Advantages



### Beyond Health

With education, insurance, legal, parent support, provider access and community, parent engagement will be consistent, frequent and organic.



### Fun and Caretaker- Centered

With secure backend, community features and inviting interface, Sojorne departs from a clinical feeling app. Sojorne bridges health tracking and monitoring seamlessly and connects parents with providers and resources they need to care for the whole child.

# OUR Pricing

*\*The pricing below is for illustrative purposes based on benchmarking.*

## Parent Monthly Subscription- Basic

- ✓ Access to the Marketplace for Insurance, Therapies and Health Providers
- ✓ Limited document Storage
- ✓ Limited Access to Free Template
- ✓ Social and Community Group Access

**Free**

## Parent Monthly Subscription- Premium

- ✓ Full Documents, Calendar, Appointment, Templates & Medication Management
- ✓ Integrated Health Records
- ✓ Interactive Milestones for ages 0-21+ for Caregivers Easy Share Options
- ✓ Social and Community Group Access, Parent Support Groups, Parent Training

**\$10-\$30**

## Provider Marketplace Monthly Subscription

- ✓ Sojorne storefronts that enable providers to sell services or goods to customer
- ✓ Access to Sojorne Users
- ✓ Professional Community for Ecosystem Providers
- ✓ Community features that enables providers to connect with each other

**\$30-\$99**

## Provider Enterprise Annual Subscription

- ✓ Remote Patient Monitoring (RPM) with Customer Service to Assist Patients (\*Customer Services Tiers Depend on Provider Plan Selected)
- ✓ Telehealth Platform and/or Telehealth Billing Services

**\$6000 +**





Thank you for your attention.  
We look forward to scheduling  
a call to get your feedback on  
our product to ensure it's  
useful to patients and  
providers.

[efe@sojorne.com](mailto:efe@sojorne.com)